

# VFL - 44 · 66

## Instruction manual for CONUM filter

Thank you for purchasing CONUM Filter. Please read this instruction manual carefully and make it sure that you understand its operation procedures before using the product. This manual is important for later reference, so please keep it in good hands.

### CAUTION

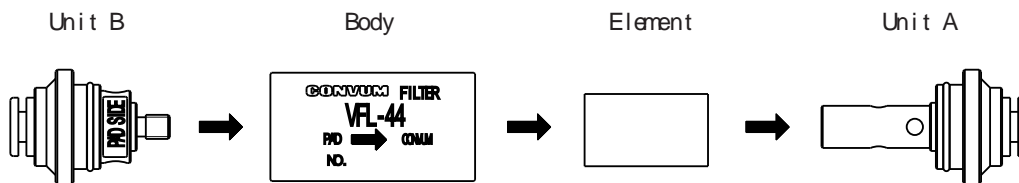
Do not use organic solvents such as thinner, trichlorethylene etc. for cleaning the case, filter element and O-ring. Organic solvents may cause deterioration for cracks etc.  
Do not connect this filter to compressed air line. This is designated for vacuum line only.  
Pay attention to the direction to install this filter i.e. the mark of [PAD] for connecting to the pad side and the mark of [CONUM] for the CONUM side.

### ■ Disassembling and cleaning procedures

Turn the unit A or B anti-clockwise.  
Remove O-ring and element from the body. Pay attention not bending or losing the removed O-ring.  
Air blow by air gun can be applied for cleaning the clogged dusts of element, but if the effect not enough, replacement of the element with new one is recommended.  
Be careful for handling the element which softy and deformable.  
Convex/Concave deformation at sealing section may reduce the filtering effect remarkably, in such case, replacement of the element with new one recommended.

### ■ Reassembling procedures

Insert O-ring and element into the original position.  
Be careful not bending or losing the O-ring.  
Pay attention to the arrow mark of the body in direction to unit A. (See below)

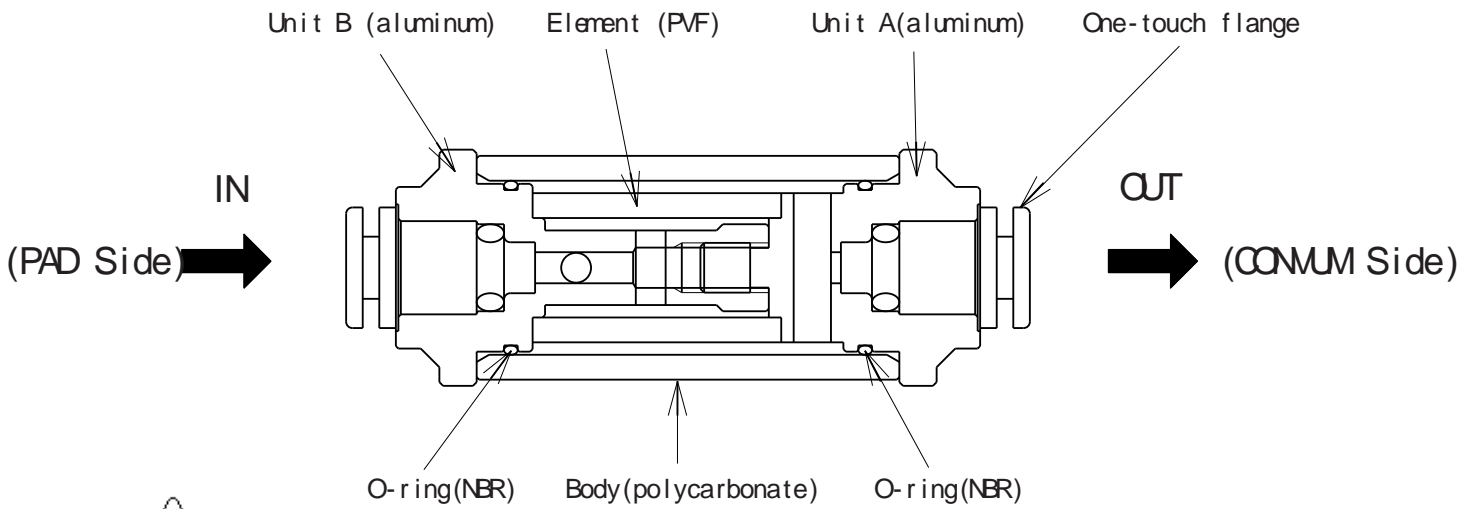


Assemble in manner that the arrow is in direction to unit A.  
( [PAD SIDE] of unit B is inserted into the [PAD] side of the body.)

### ■ Specification

Model	VFL-44	VFL-88
Outer diameter of connecting tube	4	6
Pressure tolerance (MPa)	0.5	
Usage pressure range (kPa)	0~ -95.9	
Circumferential temp. ( )	0~ 60	
Material	Unit	Aluminum
	Body	Polycarbonate
	Filter	Polyvinyl fomal
Average mesh dia. / Particle dia filtered(μ m)	130 / 15	
Mass (g)	19	20

## Structure

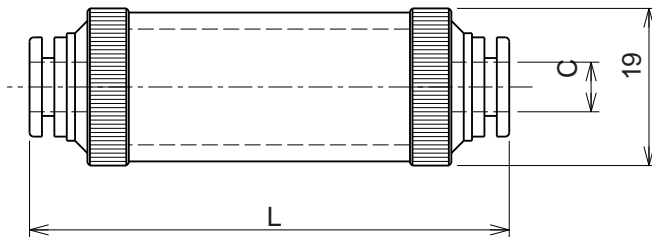


### CAUTION

- \* Switch off the power supply and air sources for disassembling and replacement of parts.
- \* Disassembling/reassembling be done by personnel knowledgeable.
- \* Not losing any parts at disassembling/reassembling.  
Missing any parts causes malfunction.

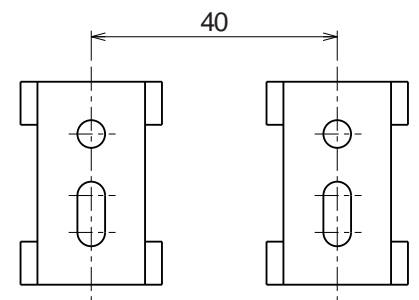
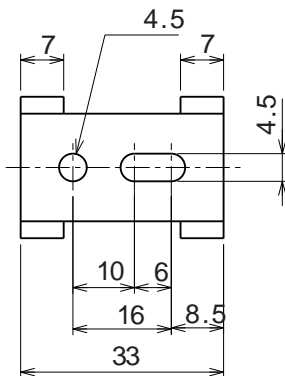
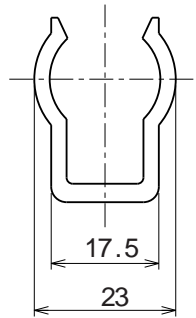
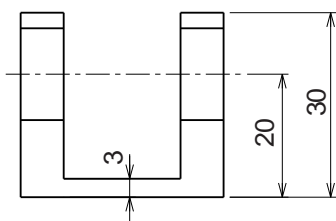
## Outer Dimension

VFL-44/66



	L	applicable tube outer dia.	C
VFL-44	55	4	
VFL-66	58	6	

VFL-46H (Holder)



Installation Recommended

# CONVUM

<http://www.convum.co.jp>