

Non-contact Cup

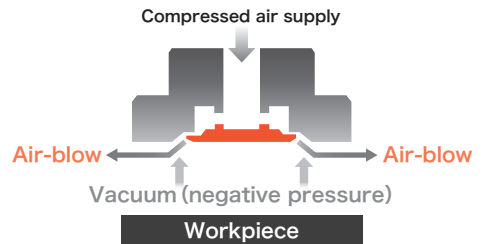


Carries workpieces without contacting with them according to Bernoulli's theorem!

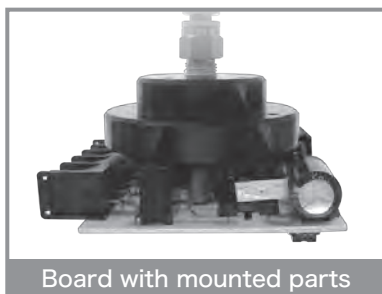


Carries workpieces without giving adsorption traces or damages to them.

COP principle

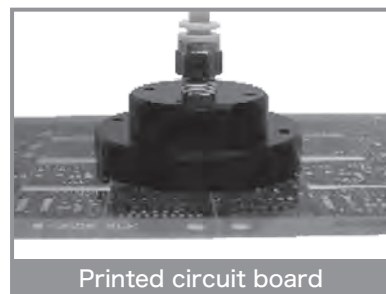


Adsorbing bumpy workpiece



Board with mounted parts

Adsorbing porous workpiece



Printed circuit board



Chemical



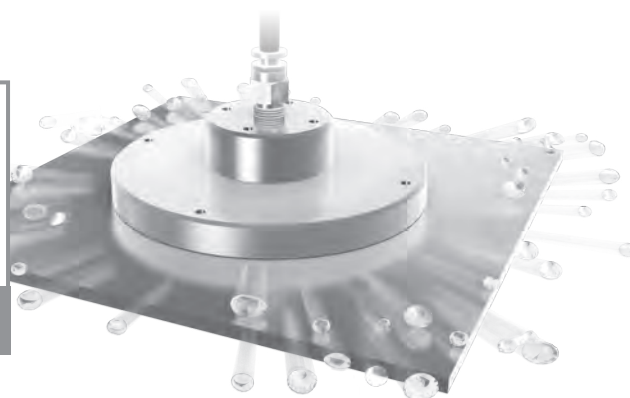
Frozen croquette (SUS type)

Adsorbs workpiece that cannot be adsorbed with adsorbing cups due to air leak.

※Contacts with a workpiece partly while adsorbing it, since the workpiece is bumpy.

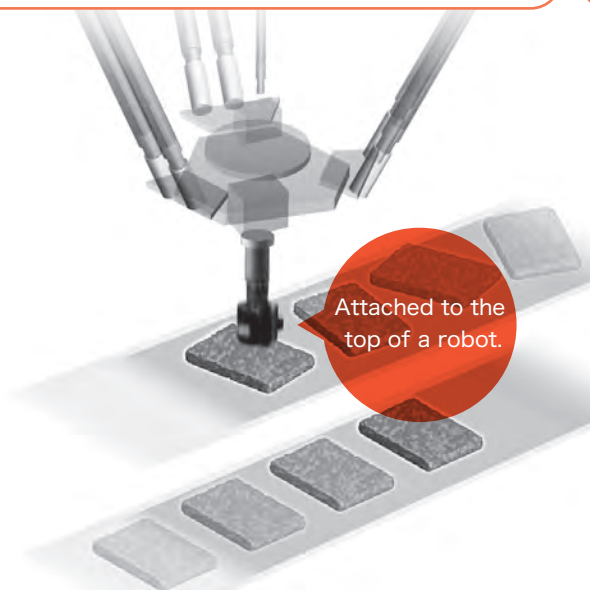
Adsorbs various foods, making use of COP'S characteristics.

The body made of stainless steel (SUS) can be washed and always kept clean. Adsorbs workpiece while removing water from their surface owing to the adsorption characteristics of COP.



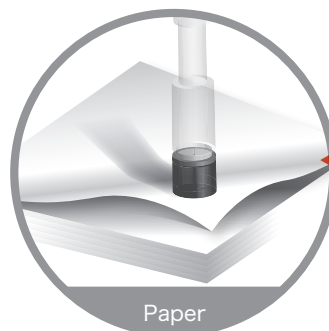
※Please consult with us for SUS body type.

Capable of high-speed carrying of non-adsorbable workpiece.



Carries workpiece without making adsorption traces.

- Thin film
- Aluminum
- Paper

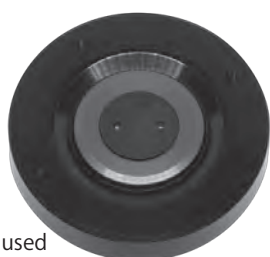


Effective to prevent taking two sheets of overlapped films or paper.

Optional attachment realizes the high-performance!

○ Anti-sliding damper

Can contact a workpiece partly if an anti-sliding damper is stuck and accordingly carry it without sliding.



Anti-sliding damper is used

○ Work-holding guides

Has threads at 4 position on the top of the body. Work-holding guides can be attached.



Work-holding guides are used

How to Order

COP – 20

① Cup O.D. (mm)

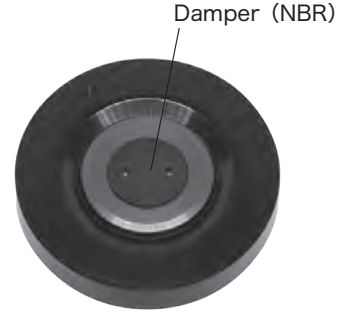
Symbol	Cup O.D.
20	φ20
40	φ40
60	φ60
80	φ80
100	φ100

Option Parts

• Anti-sliding damper
COP – 20 G

① Applicable Cup

Symbol	Applicable Cup
20	COP-20
40	COP-40
60	COP-60
80	COP-80
100	COP-100



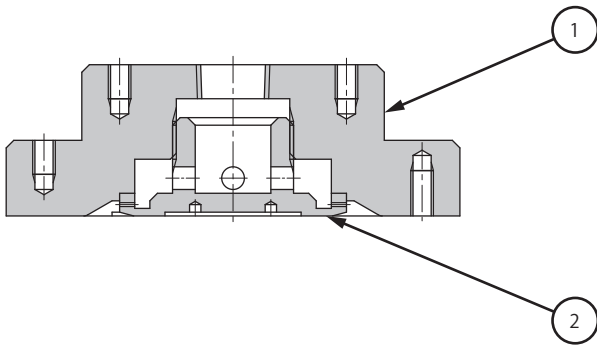
※ When using COP with damper, there will be contact between the cup and the workpiece.

Specifications

Description \ Model number	Unit	COP-20	COP-40	COP-60	COP-80	COP-100
Fluid		Air, Non-corrosive gas, Non-flammable gas				
Port size		M5	Rc1/8		Rc1/4	
Operating pressure range	MPa	0.15~0.5				
Operating temperature range	°C	0~60(No freezing)				
Lifting force	N	1.3	5.1	8.5	24.5	39.2
Air consumption	L/min(ANR)	79	114	133	242	
Weight	g	13.5	59	102	171	230

※ Lifting force and air consumption values in above table are effective when air supply pressure is set at 0.5 MPa and in the case of flat item suction.

Construction



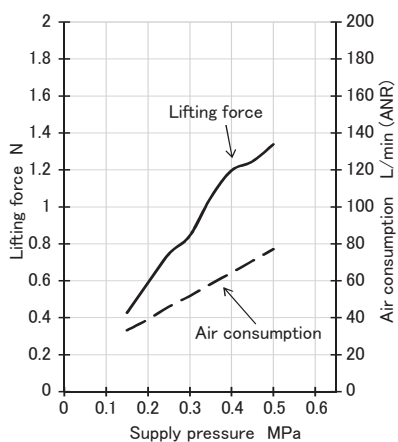
Component Parts

No.	Parts name	Material
1	Body	Aluminum
2	Nozzle	Aluminum

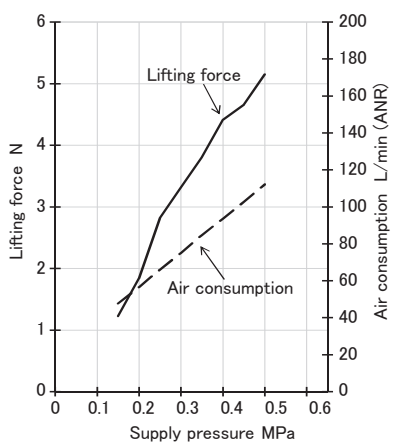
Performance Charts

(mm)

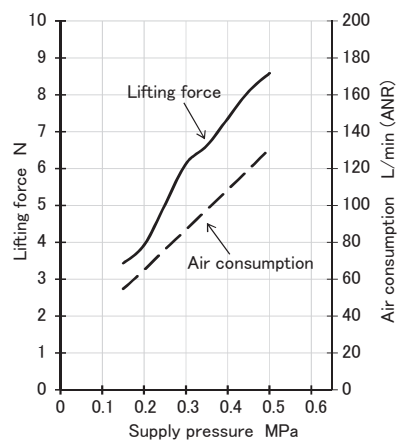
COP-20



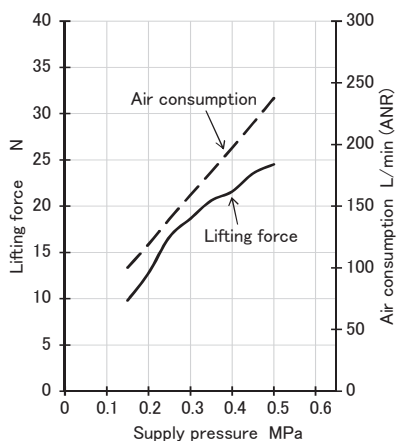
COP-40



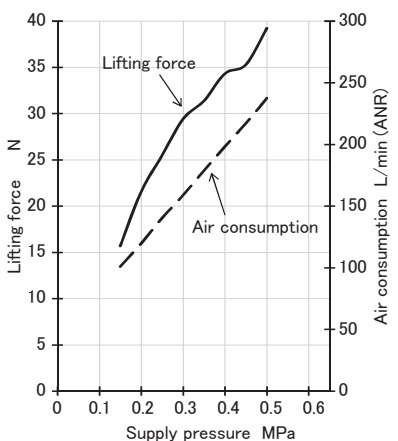
COP-60



COP-80



COP-100



Non-contact
equipment

Non-contact Cup

05
No-contact Transfer
Equipments

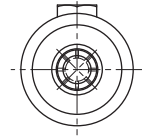
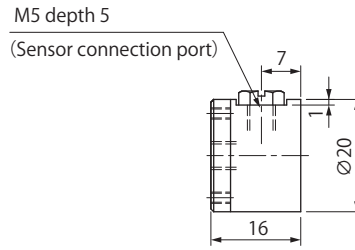
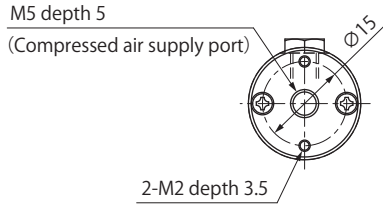
COP

COPS

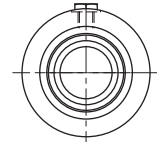
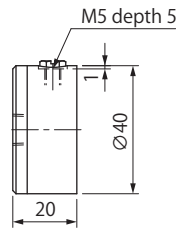
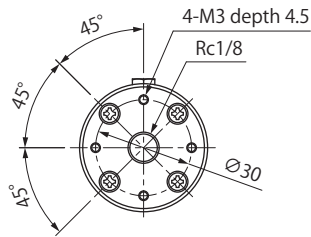
Dimensions (Body)

(mm)

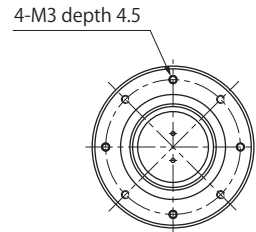
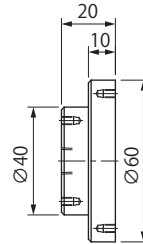
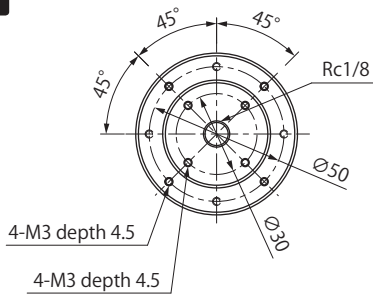
COP-20



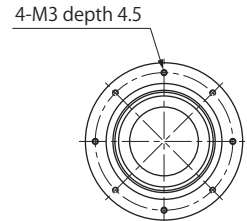
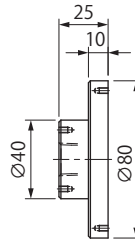
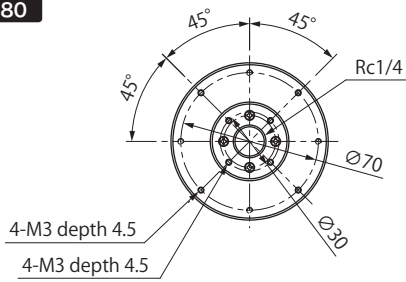
COP-40



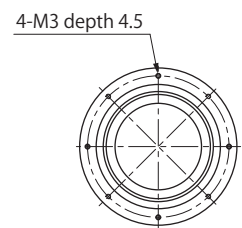
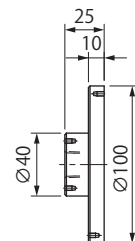
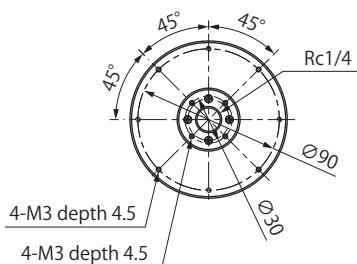
COP-60



COP-80



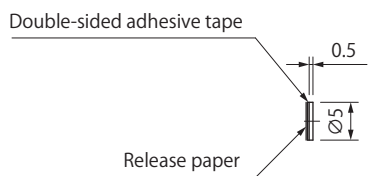
COP-100



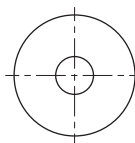
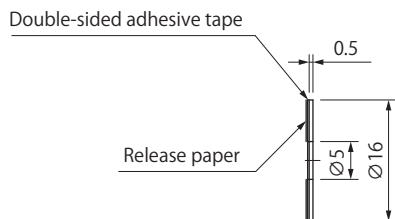
Dimensions (Damper)

(mm)

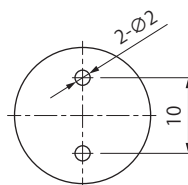
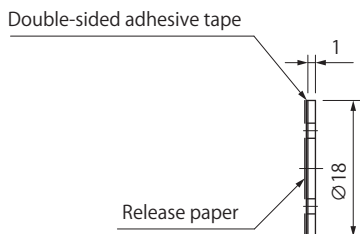
COP-20G



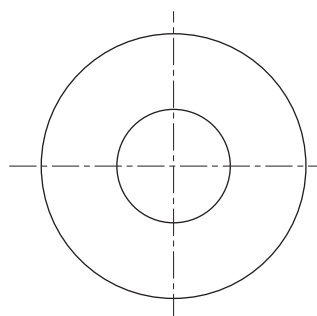
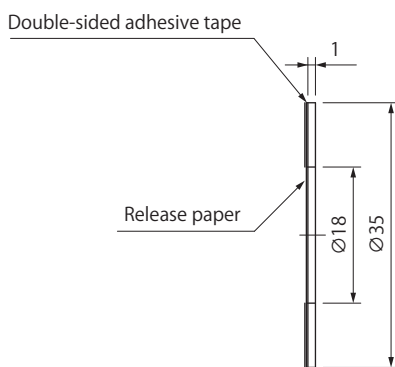
COP-40G



COP-60G



COP-80G



COP-100G

